

ksi[®]

New dimensions of light

FINE TABLE LAMPS



Eco-Friendly



New dimensions of light

Eco-friendly	3
KSI® Power LED	4
KSI® LED table lamps	5
KSI® lamp concepts	8
KSI® genuine flame table lamps	21
KSI® tailor-made	22

KSI® is successful throughout the world as the premium supplier of highest quality lamps for the leading hotel and catering industry and for spa areas.

Our efforts to achieve excellent results in quality, design and service has created a tailor-made collection which meets the individual requirements of our most demanding customers.

Whether classical style, vanguard elegance or pure minimalism – our designs always combine beauty with functionality.

With most precious materials being processed in highest quality, the KSI® lamps unite maximum elegance and impressive green ambiance – at highest security.

Choose between the natural flame of the unique KSI® special oil and the leading technology of rechargeable accumulator operated LED lamps with the cordless KSI® LED system.

Hans E. Kolk
Owner



ECO-FRIENDLY

ALL LAMPS HANDMADE IN GERMANY

KSI[®] POWER LED

Approximately 200 percent more brightness!



LAMP BASE MATERIALS

Whatever you want!

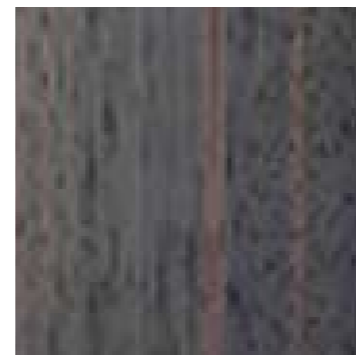
Lamp bases options



Gold plated



Chrome matted



All kinds of precious wood



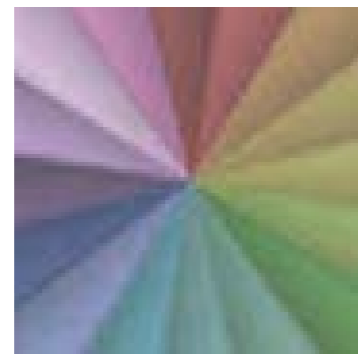
Silver plated



Nickel



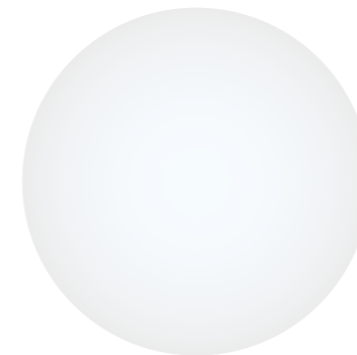
Chrome



And any other colour you like

LED COLOURS

LED Colours options



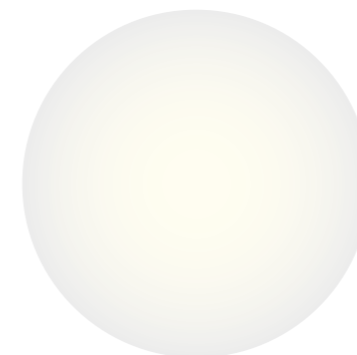
Power LED - cool-white



Red



Purple



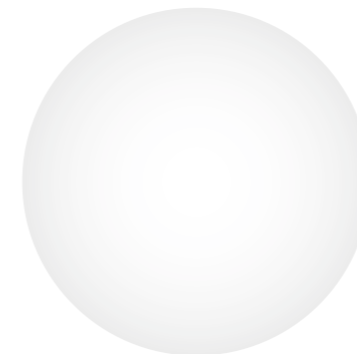
Warm-white



Green



Pink



Cold-white



Blue



Orange



KSI[®] P₂

Also available with power-led!



KSI[®] P₂

Exclusive model for Etihad towers Abu Dhabi.

An outdoor dining table set with a white tablecloth and a dark blue runner. The table is set with white plates, silverware, and wine glasses. Three mushroom-shaped lamps with pink domes and dark brown stems are placed around the table. The background is a lush green field with trees under a clear blue sky.

CONCEPTS

Sustainable, tailor-made solutions.

KSI[®]P₁



KSI[®] A₁



COMING SOON!
COMING SOON!



ksi[®] X₁ CHROME

KSI[®] X₁



KSI[®] X₂



KSI[®] G₁₁



COMING SOON!
COMING SOON!

KSI[®] Q₁



W
KSI® W₁



KSI[®] M₁





KSI[®] M₂

KSI[®] Q₁



ksi[®]

New dimensions of light



Model: KSI[®] 10 Port Battery Charger



Model: KSI[®] Magic Lighter



GENUINE FLAME

KSI® genuine flame table lamps – timeless elegance through impressive straightness. The perfect supplement for the individual ambience.



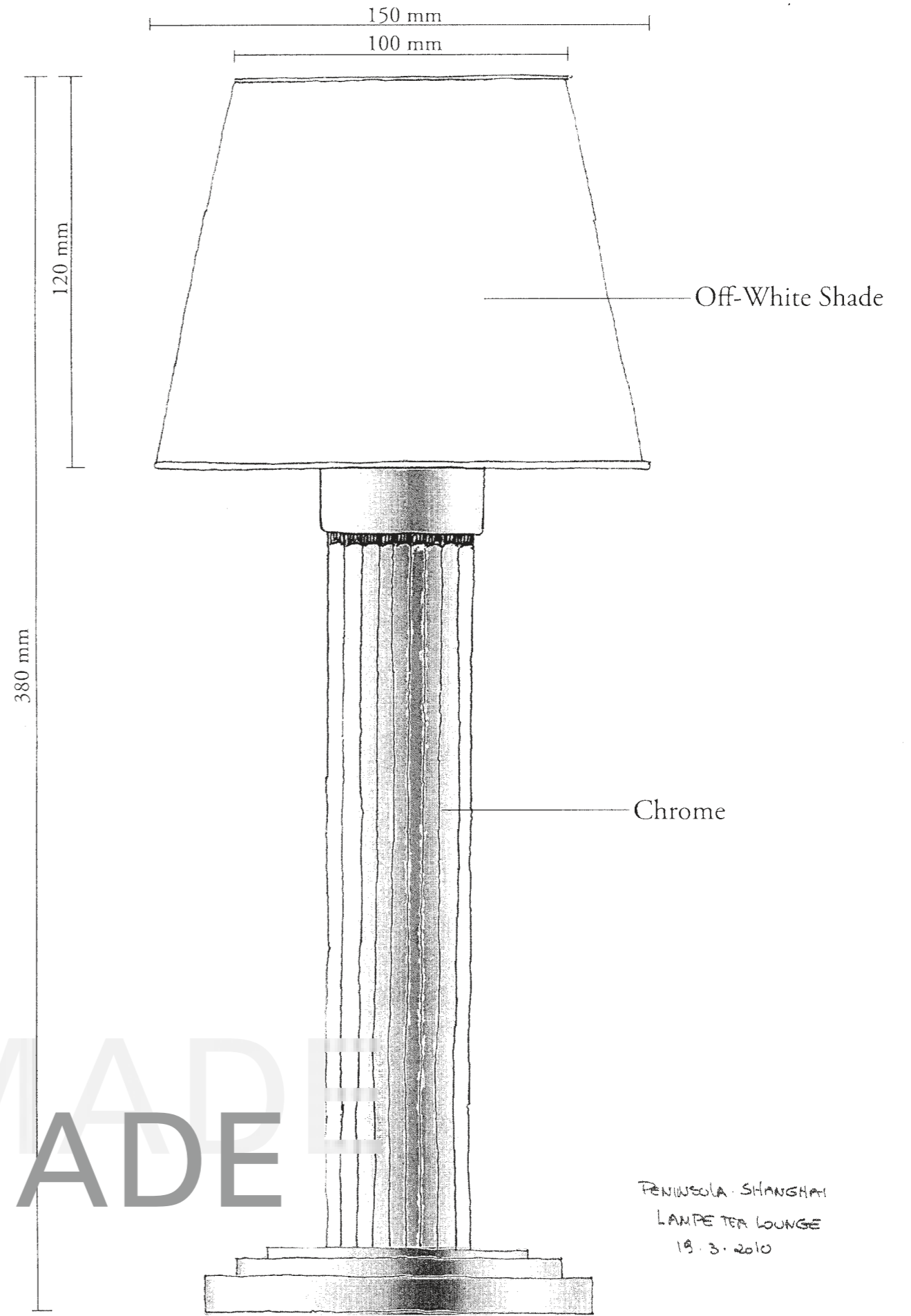
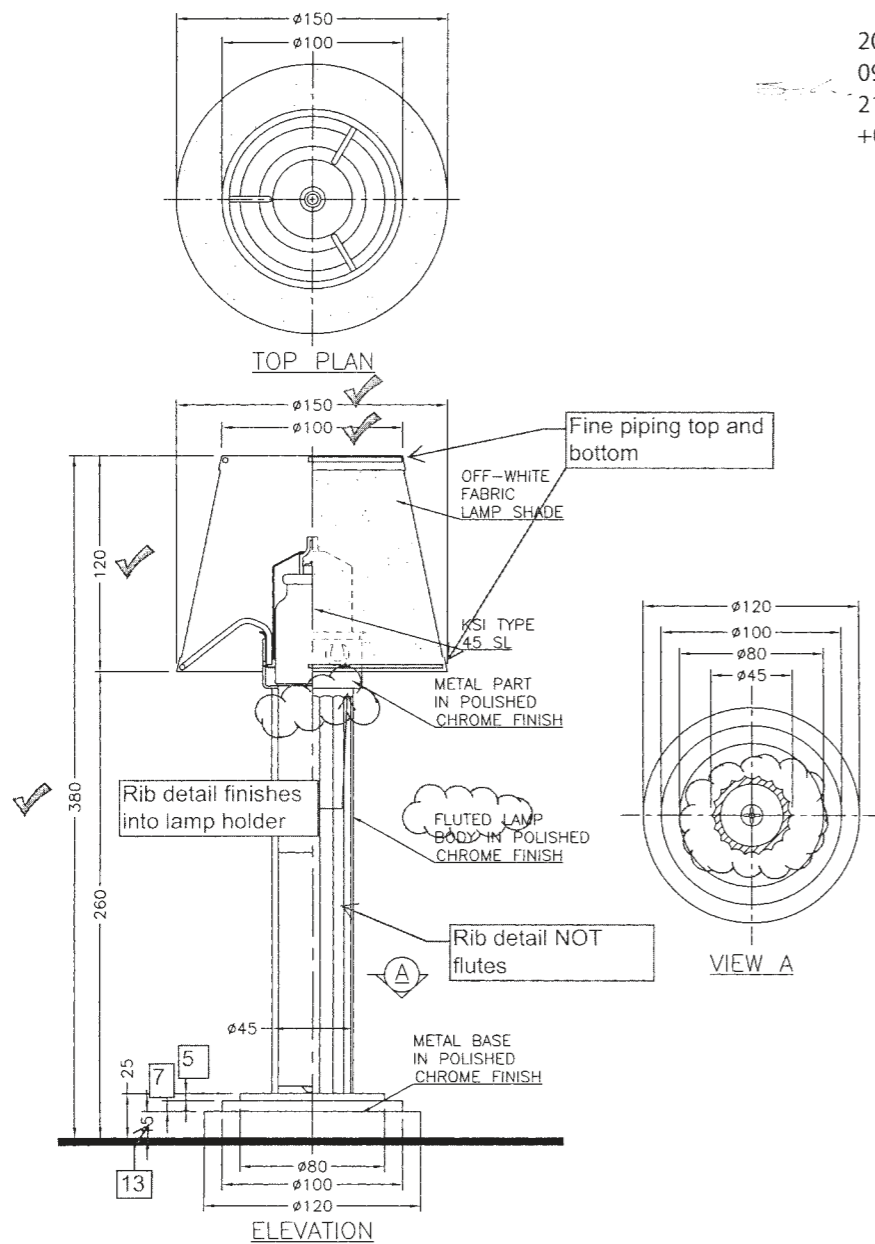


KSI® TAILOR-MADE
KSI® TAILOR-MADE

All lamps you see are just indication, we make any lamp in any material you want!

© 2014 KSI
All rights reserved. No part of this publication may be reproduced, stored in a retrieval system, or transmitted, in any form or by any means, electronic, mechanical, photocopying, recording, or by any information storage and retrieval system, without the prior written permission of KSI.

2010.05.
09
21:48:02
+08'00'



MODEL NO.: TL-9931	ALTERATIONS	SIZE OF DRAWING : A4 TOLERANCES UNLESS SPECIFIED DIMENSIONS : ±0.5MM ANGLES : 1/17°	SCALE : 1 : 3	DWG. BY:	CHECKED BY:	DATE: 2010-5-7	PROJECT: PENINSULA SHANGHAI	DRAWING TITLE: TABLE LAMP LOBBY	NOS
-----------------------	-------------	--	---------------	----------	-------------	----------------	-----------------------------------	---------------------------------------	-----

KSI® TAILOR-MADE

All lamps you see are just indication, we make any lamp in any material you want!

PENINSULA SHANGHAI
LAMP TEA LOUNGE
18.3.2010

LAMP BASE MATERIALS

Whatever you want!

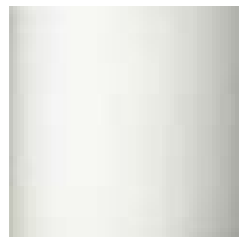
Bases



Gold plated



Silver plated



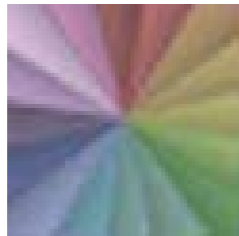
Chrome



Chrome matted



Nickel



And any other colour you like

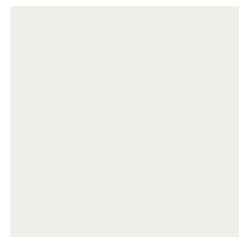
Glasses



Clear



Frosted



White



Yellow



Red

SHADE FABRICS

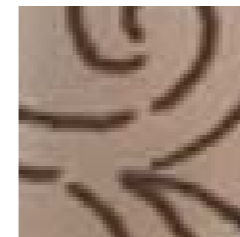
Lampshades



Arabesc beige



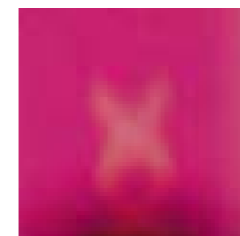
Arabesc grana



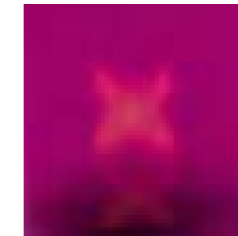
Arabesc chocolate



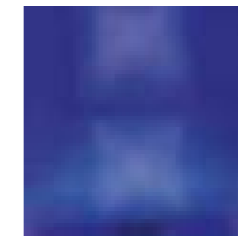
Arabesc black



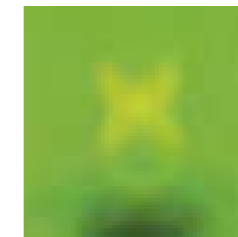
Pink marquise



Purple marquise



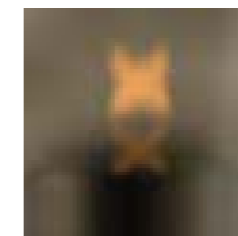
Blue marquise



Green marquise



Orange marquise



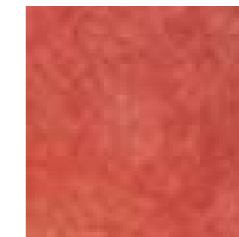
Black marquise



White



Bordeaux



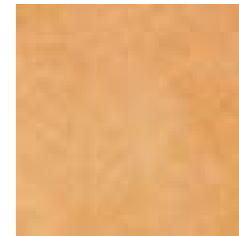
Red



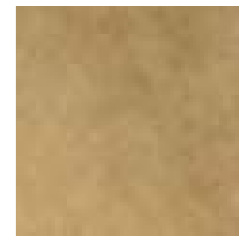
Yellow



Green



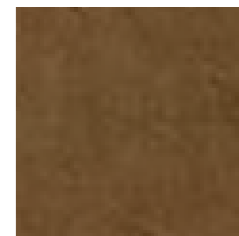
Orange



Brown



White java



Brown java



Red java

EMIRA KSI® EMIRA₁



KSI[®] RUBY



ARCELIA

KSI[®] ARCELIA



KSI[®] CIRA



BENIGNA

KSI[®] BENIGNA₁



KSI[®] BENIGNA₂



BENIGNA₃

KSI[®] BENIGNA₃



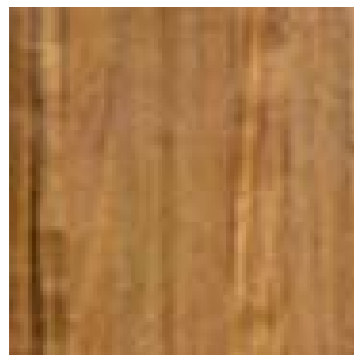
NATURAL MATERIALS

Whatever you want!

GLASS DESIGN

ACRYLIC GLASS DESIGN

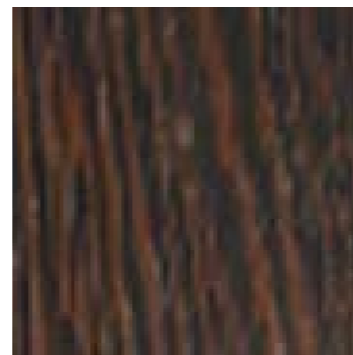
Nature-Wood Lamp base options (all kinds of wood available)



Amazakoue



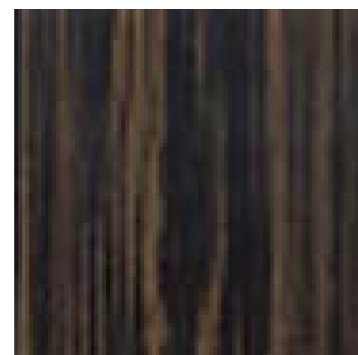
Tulipwood



Wengé



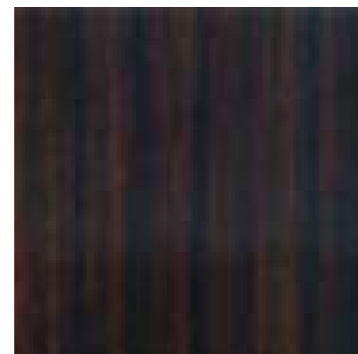
Agate



Makassar maron



Duna



Makassar

Glasses



Clear

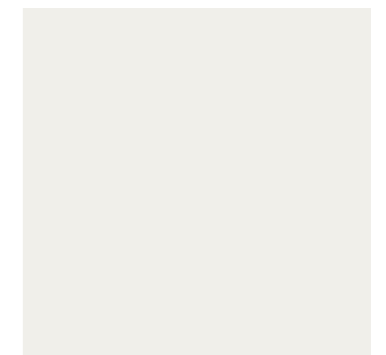


Frosted

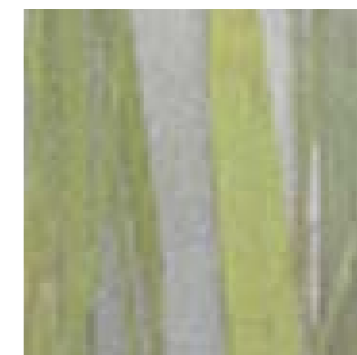
Acrylic glasses



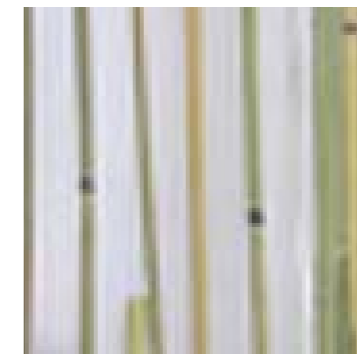
Brown



White



Grass



Bamboo

BENIGNA₃

BENIGNA₃ Tulipwood



BENIGNA

KSI[®] BENIGNA₁

BENIGNA, Tulipwood



CUBETTO KSI® CUBETTO

Cubetto white – grass



CUBETTO KSI[®] CUBETTO

Cubetto wengé – brown



CUBETTO

KSI[®] CUBETTO

Cubetto wengé – bamboo



ksi[®]

New dimensions of light



Eco-Friendly

- > Pioneering technology
- > User-friendly and highly efficient
- > Excellent value
- > No soot, no wax, no odour
- > Superior safety thanks to intelligent lighting system



Fuel cells: KSI[®] 35 EC



KSI[®] 45 SL



KSI[®] 50 SE



KSI[®] 40 NR

KSI[®] Fuel Cells:

Type KSI[®] 40 NR for:
KSI[®] Benigna
Burning time +/- 40 h

Type KSI[®] 45 SL for:
KSI[®] Emira
Burning time +/- 40 h

Type KSI[®] 35 EC for:
KSI[®] Ruby
KSI[®] Cira
KSI[®] Arcelia
KSI[®] Cubetto
Burning time +/- 35 h

ksi[®]

WWW.KSI-LAMPS.COM

KSI-Gastronomiezubehör-Handels- und Produktionsgesellschaft mbH, Siemensweg 4, 70794 Filderstadt, Germany
Tel. int. +49 (0) 7 11/53 06 05-0, Fax int. +49 (0) 7 11/53 06 05-15, E-mail: office@ksi-lamps.com